

# Certificate of Analysis

Prepared for:

LCJ Herbal Remedies  
75mg Caps

Product Description: Hemp CBD SoftGel 75mg, OHSO, CO2I, NAT (30ct x100 bottles)

Invoice Number: 2021-556D

Lot Number: SG-06121-B2

Manufacture Date: Mar 02, 2021

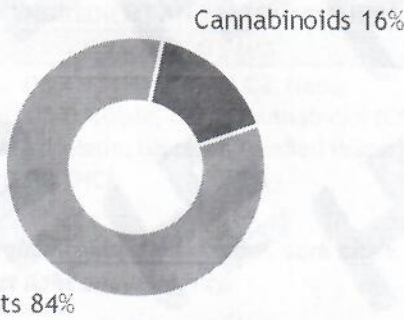
Product Code: SG-75-CO2I-OHSO-NAT-0.5

Date of Analysis: Apr 16, 2023

Best By Date: Mar 02, 2023

## Cannabinoid Potency - Expected CBD: 75.00 mg/SoftGel ± 10%

### % Total Cannabinoids

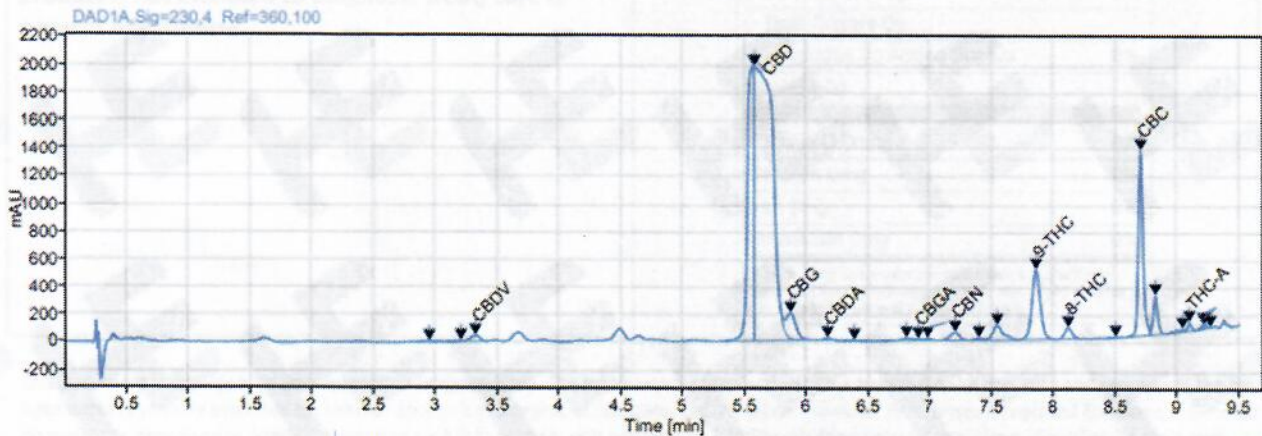


	mg/sg	%	LOQ (mg/sg)
<b>Total CBD:</b>	<b>78.38 mg/sg</b>	<b>15.68 %</b>	0.05 mg/sg
CBD:	78.38 mg/sg	15.68 %	0.05 mg/sg
CBDa:	<LOQ	<LOQ	0.05 mg/sg
<b>d9-THC:</b>	<b>1.26 mg/sg</b>	<b>0.25 %</b>	0.05 mg/sg
CBC:	0.93 mg/sg	0.19 %	0.05 mg/sg
CBG:	0.53 mg/sg	0.11 %	0.05 mg/sg
CBGa:	<LOQ	<LOQ	0.05 mg/sg
CBN:	0.06 mg/sg	0.01 %	0.05 mg/sg
CBDV:	0.11 mg/sg	0.02 %	0.05 mg/sg
d8-THC:	0.20 mg/sg	0.04 %	0.05 mg/sg
THCa:	<LOQ	<LOQ	0.05 mg/sg

Density: N/A (kg/m³)      Specific Gravity: N/A

\*Total d9-THC and CBD are calculated taking into account the loss of a carboxyl group during decarboxylation.  
The formulas are as follows : d9-THC = d9THC + (THCa \*(0.877))      CBD = CBD + (CBDa \*(0.877))  
\*\*Any compounds with results listed as "ND" were not detected during analysis.  
\*\*\*LOQ is the limit of quantitation for any given analyte.

### Chromatogram



Prepared By: N. Stasi  
Operations Manager  
Sep 23, 2021

Reviewed By: E. Casey  
Formulation and R&D Manager  
Sep 23, 2021



Analyzed via HPLC Under These Conditions: Humidity: 26% Temperature: 77.5 F

ISO 9001:2015 Certificate Number: US4293

Certificate of Analysis test results are based only on the analysis of the product listed in the "Product Description" of this form. Hammer Enterprises, LLC, makes no claims as to the efficacy, safety, or other risks associated with any detected or non-detected compounds reported herein. All analyses conducted at Hammer Enterprises, LLC, is performed on well-maintained, quality instruments utilizing Good Laboratory Practices and validated methodology. This Certificate may not be reproduced except in full, without the written approval of Hammer Enterprises, LLC. DISCLAIMER: When reviewing certificate ensure watermark is complete and intact. Watermark will present as repeating HE logos diagonally across the entire page. The authenticity of this document is not guaranteed if there is evident modification, blocking, or alterations of the watermark.